



Great Britain – Queen Victoria: Line-Engraved Imperforates The Richard Frajola Collection

386th Heinrich Köhler-Auction
Friday, 19 September 2025, 11:30 a.m.

Auctioneers · Versteigerer: Tobias Huylmans · Michael Hilbertz · Dieter Michelson



Auction Venue · Versteigerungsort

The auction takes place at our premises in Wiesbaden, Germany.
Die Versteigerung findet in unseren Geschäftsräumen in Wiesbaden statt.

Heinrich Köhler Auktionshaus GmbH & Co. KG
Hasengartenstr. 25, 65189 Wiesbaden

Phone +49 (0)611 34149-0 Fax +49 (0)611 34149-99
E-mail info@heinrich-koehler.de www.heinrich-koehler.de

Print · Druck: mediaprint solutions, Paderborn

You can find our information on data protection at www.heinrich-koehler.de/en/privacy-policy
Unsere Informationen zum Datenschutz finden Sie unter www.heinrich-koehler.de/de/datenschutzerklärung



Table of Contents · *Inhaltsverzeichnis*

GREAT BRITAIN

1840, One Penny Black, Plate 1–11	8
1840, Official Issues, VR One Penny Black, plate A (never issued)	19
1840, Two Pence Blue, Plate 1 and 2	22
1841, One Penny Red, printed from „Black Plates“, 1, 2, 5, 8–11	28
1841, Two Pence Blue, plate 3 and 4	38
1854, One Penny Red, Die I, Plates 178–206 and Reserve Plates R1–R14	42
1855, One Penny Red, Die II, Plates 1–68, Reserve Plates 15–20	44
1855, Two Pence, Plate 5	53
1864, One Penny, Die II, Letters in All Four Corners, Plates 71–225	54
1858, Two Pence, Die II, Letters in All Four Corners, Plates 7–15	58
1870, Half Penny and Three Half Pence	61
1841, Postal Stationery	66
1915, Seahorses	68

Foreword

In the Footsteps of Rowland Hill

It began with a single, transformative idea in the mind of Sir Rowland Hill: to make the sending of letters simple, affordable, and universal. In 1840, his vision became reality with the world's first adhesive postage stamp – a small engraved marvel that changed global communication forever.

Hill's creation did more than revolutionise correspondence; it sparked one of history's most enduring passions. For 185 years, collectors have pursued these miniature works of art with remarkable dedication, evolving philately into a discipline where the smallest detail – a plate number, variety, state or shade – can inspire fierce rivalry among connoisseurs.

This special sale celebrates the very foundation of Great Britain's philatelic story: the imperforate, line-engraved issues of Queen Victoria. It offers imprimaturs – rare proofs taken from the first registration sheets of a new plate – alongside issued imperforates, specimen overprints, fugitive ink trials, royal reprints, Neale's steam press experiments, Dr. Perkins' trials on blued security paper, and stamps on Dickinson paper with its distinctive security thread.

In their day, imprimatur sheets were sent to Somerset House for approval before a plate entered use. A few individual stamps would be carefully removed for reference or presentation, with the removal noted on the reverse by a postal official. Today, those removed examples are found only in the Royal Collection, in distinguished private holdings, or have regrettably been lost to time.

Some imprimatur sheets, such as those for the 1840 Two Pence, no longer exist. Others survive but bear the measured scars of selective removal which is usually fewer than twenty-five stamps per sheet, with at most three corner examples taken. For issues prior to the halfpenny of 1870 (printed in 480 impressions), imprimatur sheets contained 240 stamps arranged in twenty rows of twelve, each stamp with identifying corner letters. Plate numbers appear only on the four corner positions.

The collection offered here is the work of a philatelist of rare discernment and one who understood that quality and rarity go hand in hand. Great Britain specialist Karl Louis, who was very honoured to be asked to describe this unparalleled collection, notes that his card index reveals over 250 recorded provenances for fewer than 100 lots, which is an extraordinary testament to the significance of this material.

These are items capable of elevating even the finest Great Britain collections. And for those whose interests range beyond British philately, the sale includes iconic pieces of such rarity and beauty that they transcend national collecting boundaries.

In truth, this auction is more than a sale. It is a journey into the earliest chapters of postal history and a walk in the footsteps of Rowland Hill, where every imperforate tells a story of innovation, artistry, and the dawn of modern communication.

Happy hunting!



Tobias Huylmans
Geschäftsführer · Managing Director



Dieter Michelson
Geschäftsführer · Managing Director



Michael Hilbertz
Chephilatelist · Senior Philatelist

The Karl Louis ‘Card Index’

Added Value by Proof of Provenance

Describing Philatelic rarities calls for more than just quoting catalogue numbers and values. Provenance is a philatelic pedigree of former owners from the inception of philately until the present day. Those collections held in the highest esteem by their contemporaries and containing the great rarities, the modern day 'Large Gold' exhibits, can be traced back to the collectors who once owned the particular rarity and the auctions where they were sold and changed hands. Frequently, the further back a philatelic pedigree goes, the more coveted the rarity becomes. Provenance is a quality seal. As in Art, Provenance is an indispensable attribute: in this case, of valuable Great Britain stamps and covers.

« Provenance is a seal of quality
As in Art, Provenance is an
indispensable attribute »



Louis Oram Trivett



Baron Anthony de Worms



Charles Nissen



Maurice Burrus





The most comprehensive Provenance files of rare Great Britain has been meticulously maintained by Karl Louis AIEP, FRPSL, shareholder of the Köhler & Corinphila Holding. Karl started his Great Britain 'Card Index' more than 35 years ago. Consisting of presently more than 100,000 records it is – to the best of our knowledge – by far the most comprehensive and important census of British Stamps in the philatelic world.

All Provenances given for items offered in this catalogue are based on information from the 'Karl Louis Card Index' and we will provide as much information on previous owners and sales as possible. For further details, especially of what kind of items can be found in the 'Card Index', please visit the website of our sister company: www.corinphila.ch



Sir Gawaine Baillie

For more information on provenance research, or if you intend selling your Great Britain Collection, please contact Karl Louis: louis@heinrich-koehler.de



Dr Douglas Latto





GREAT BRITAIN – QUEEN VICTORIA: LINE-ENGRAVED IMPERFORATES

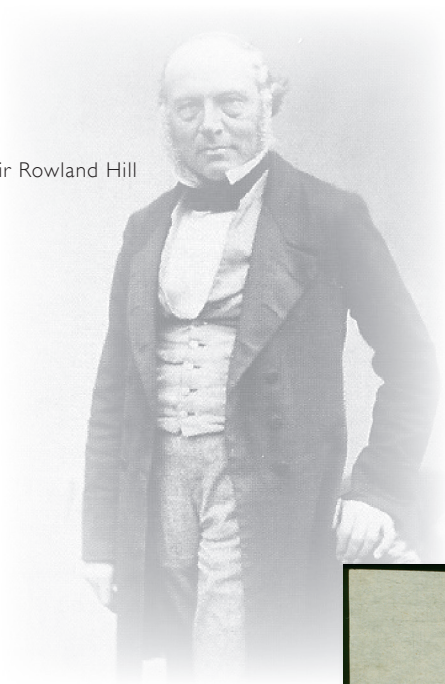
The Richard Frajola Collection



The printing presses of Perkins Bacon & Co.

1840, One Penny Black, Plate 1-11

Sir Rowland Hill



Lot No. SG No.

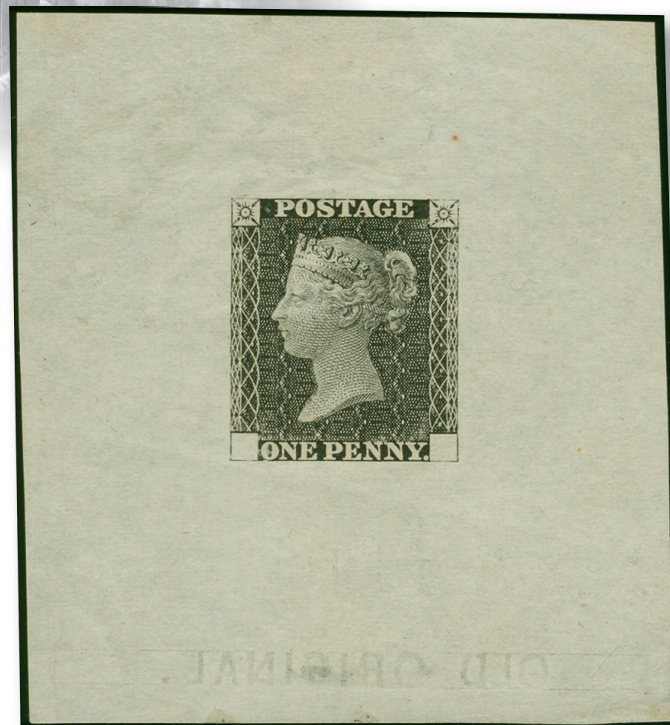
301• DP25 (★)

1890, 1d. proof impression of the 1840, 1d. black, die I, with additional (inked) reversed engraving '1' and 'OLD ORIGINAL' below the impression, slightly reduced in size, the design showing no signs of wear, minor corner imperfections in the margins where the die proof was originally affixed, but still fine and fresh. (S.G. Cat. GBP 12.500)

Provenance: ,K.M.' Collection, Spink, 6 June 2007, lot 221

Start price

3500



Lot No. SG No.

302• DP25 (★)

1860/71, 1d. proof impression of the 1840, 1d. black, die I, with additional (albino) reversed engravings ,1' and ,OLD ORIGINAL' below the impression, a later impression showing signs of wear, a few tiny marginal thins clear of design and usual faint bends, still attractive and very fresh, B.P.A. certificate (2001). (S.G. Cat. GBP 12.500)

Provenance: Robson Lowe, 15 April 1975, lot 50

,TES' Collection, Christies, 5 October 1995, lot 149

Gaetano Vullo Collection, Harmer, 12 November 2003, lot 38

Start price

4000



Alan Holyoake



Lot No. SG No.

303• AS1, (★)
AS2 Im-
primatur

Start price

1840, 1d. black, plate 1, TD, two singles cut from the First and Second Imprimatur sheets („Before Hardening“ and „After Hardening“) with large to very large margins all round, the Imprimatur from the First imprimatur sheet dated 15 April showing the sharp impression of the earliest state of the (unhardened) printing plate 1, the latter from the Second Imprimatur sheet dated 27 April showing the contrasting worn impression. A magnificent Matched Pair from the first printing of the world's first postage stamp! For the other imprimatur (first printing of the world's first “never issued” postage stamp) registered on 15 April 1840, see lot 320). BPA certificates for each (2009) (S.G.Cat.: GBP 30'000)

Remarks: Neighbour stamps of the 1d., TD, from Second Imprimatur: TC was in the Board of Inland Revenue Reference Collection TE is in the Tapling Collection, British Museum.

Provenance: For the 1d., TD, First Imprimatur sheet:

Harmer, 30 November 1954, (2500th. Jubilee Sale), ex lot 234

„The Magnificent Collection of imperforate Imprimaturs (1840-1892)“

Dr. & Mme. Servat of Belgium Collection, Harmer, 15-16 March 1976, lot 3

Robson Lowe, 21-22 April 1977, lot 2042

Alan Holyoake („MAYFLOWER“) International Grand-Prix Collection 2010

Provenance: For the 1d., TD, Second Imprimatur sheet:

Christies, 17 June 1986, lot 77 (stated to be ex Crawford Collection)

Alan Holyoake („MAYFLOWER“) International Grand-Prix Collection 2010

12000



Sir Gawaine Baillie



Alan Holyoake



Lot No.	SG No.		Start price
304•	2	<p>★ 1d. black, plate 1A,TD, earliest impression showing practically no plate wear; unused with large part original gum, a very rare and exceptional early printing from plate 1A, B.P.A. certificate (1989) (S.G.Cat.: 24'000)<i>Note:The stamp must have been printed soon after Plate 1 was registered, but certainly before April 27, 1840, because it shows not as much plate wear as the TD Imprimatur from the Second Imprimatur sheet!</i></p> <p><i>Provenance: Sotheby's, 11 – 12 May 1989, lot 3</i> <i>Sir Gawaine Baillie Collection, Sotheby's, 28 – 30 September 2005, lot 20</i> <i>Alan Holyoake („Mayflower“) International Grand-Prix Collection (2010)</i></p>	5000



305•	3	<p>⊙ 1d. grey-black, Plate 1A, EH, a late printing from the very worn printing plate 1, large regular margins all round and centrally cancelled with a red Maltese Cross. (S.G.Cat.: GBP 525)</p>	180
------	---	---	-----



Lot No. SG No.

306• 3



1d. grey-black, plate 1A, OD, a „latest“ printing from the extremely worn plate 1, large to very large margins all round and tied by a neat strike of a bright red Maltese Cross to local London entire, red „T.P. /Edgeware Rd“ Receiving House handstamp on front and „MY 28 1840“ datestamp on reverse. An extremely fine May-Date cover showing the rapid plate wear of the unhardened plate 1 shortly before being withdrawn, extensively re-engraved by re-entering and hardened to continue life as plate 1B. (S.G.Cat. GBP 1.000)

Start price

300



307• 3



1d. grey-black, Plate 1A, GD, a late printing from the very worn printing plate 1, very large and regular margins all round, tied with a red Maltese Cross to envelope, „RUNCORN“ receiving house handstamp on front and „PRESTON BROOK AU 3 1840“ c.d.s. on reverse for dispatch, addressed to Bakewell, a highly attractive late usage of the very worn plate 1A, Dr. Enzo Diena certificate (1998) (S.G. Cat.: GBP 1000)

250



Lot No.	SG No.		Start price
308•	2	★ 1d. black, plate 1B, HH, unused with large part original gum, large to very large margins with a small part of HG on the left, very fresh, B.P.A. certificate (1978) (S.G. Cat.: GBP 12'500)	3000



Harold W. Fisher



Sir Gawaine Baillie

309•	AS14 Im-primatur	(★) 1d. black, plate 2, T1, Imprimatur from the Second Registration sheet, large to very large margins all round, very fine and rare. R.P.S.L. certificate 1983 (S.G. Cat.: GBP 15.000)
------	------------------	---

Provenance: Robson Lowe, 21 June 1950, lot 167

Ernest Dale Collection, Stanley Gibbons, 10 – 11 June 1969, lot 26

H.W. Fisher Collection, Phillips, 22 – 23 Sept. 1983, lot 53

Stanley Gibbons, Nov. 1983

Sir Gawaine Baillie Collection, Sotheby's, 29 Sept.- 1 Oct. 2004, lot 34

4000



Lot No. SG No.

310• AS20 (★)

Start price

1d. black, plate 3, TF, Imprimatur with large to very large margins all round, very rare, only one Imprimatur sheet taken with just 23 singles removed, many of which are in institutional collections! R.P.S.L. certificate (1969) (S.G. Cat.: GBP 18'000)

Provenance: H.R. Harmer, 21/28 September 1925, lot 350

Robson Lowe, 5 November 1958, lot 14 (offered as a normal stamp)

Robson Lowe, 18 February 1959, lot 42 (offered as an Imprimatur)

John Taylor (1969)

6000



311• 2

△

1d. black, plate 4, AH, variety „defective check letter ‚H‘ in lower right corner“, large margins all round, tied by red „CAMELFORD undated town obliteration in addition to red pen cancellation to piece. A very rare obliteration, just ten items with the red CAMELFORD obliteration recorded in the Karl Louis Card Index, of which this with a full strike is certainly among the finest existing. RPSL certificate (1965) (S.G.Cat. GBP 20.000)

Provenance: Wills Collection, Harmer, 7 November 1989, lot 198

Phillips, 2 Sept. 1993, lot 159 (illustrated in colour on front cover of auction catalogue)

J.E. Safra Collection, Spink, 5 May 2014, lot 1049

2500



Earl of Crawford



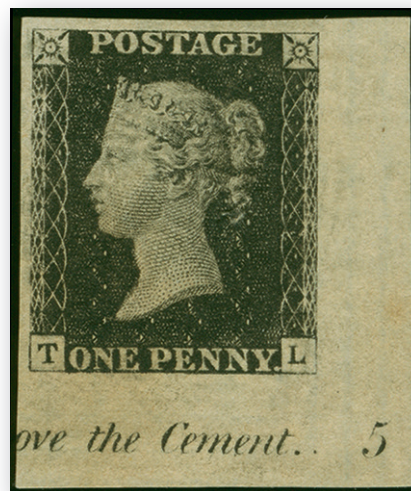
Colonel A.S. Bates



Charles Nissen



Sir Cyril Humphries



Lot No. SG No.
312• AS25 Im-
primatur

1d. black, plate 5, TL, Imprimatur from the First Registration sheet (before hardening) with corner sheet margins, inscription and plate number „5“, very large margins on the other sides, tiny pin hole under Queen's chignon not detracting from the magnificent appearance. A highly important imprimatur. R.P.S.L. certificate (1981)

Provenance: Earl of Crawford (1913)

Colonel A.S. Bates, Harmer, 3 – 5 Dec. 1934, lot 489

Charles Nissen, The British Philatelist, May 1951

Stanley Gibbons (1981)

„TES‘ Collection, Christies, 5 October 1995, lot 238

„Chartwell‘ Collection, Spink, 5 July 2012, lot 70

Start price

20000



Lot No. SG No.

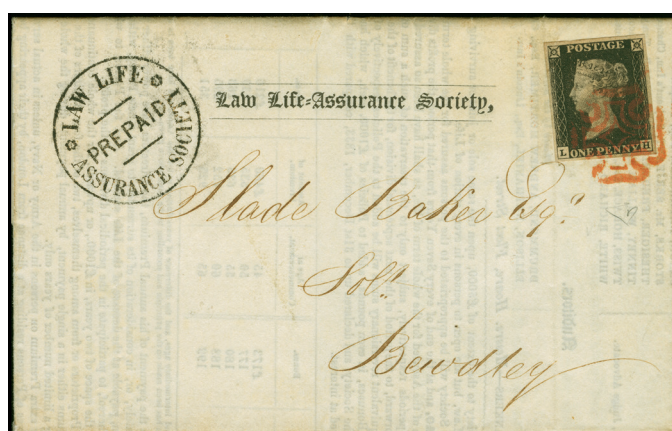
313• 2



1d. black, plate 5, LL, large regular margins all round, tied by a black Maltese Cross to entire dated „Frampton April 6th. 1841“, „BOSTON AP 7 1841“ and „FOLKINGHAM AP 8 1841“ c.d.s. on front, addressed to Threackingham nr. Folkingham, extremely fine and fresh. (S.G.Cat.: GBP 775.-)

Start price

200

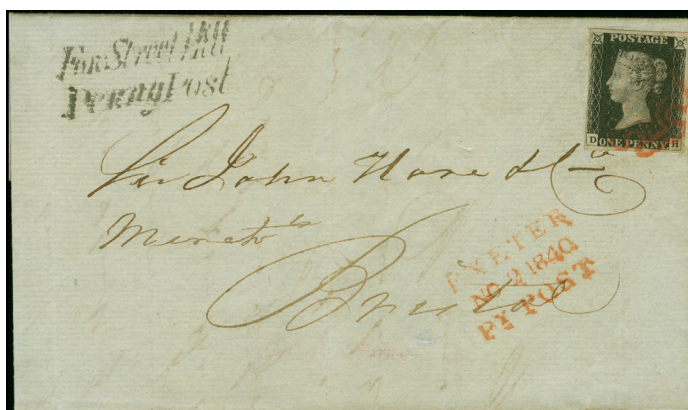


314• 2



1d. black, plate 6, LH, very large and regular margins all round, tied by red Maltese Cross to decorative printed entire of the „Law Life Assurance Society“ („Notice of Renewal“ inside), „PREPAID“ sender's handstamp on front, London datestamp „OC 17 1840“ for dispatch on reverse, addressed to Bewdley. Exceptional and of finest possible quality! Dr. Enzo Diena certificate (1991) (S.G.Cat. GBP 775)

250



SS „Great Western“

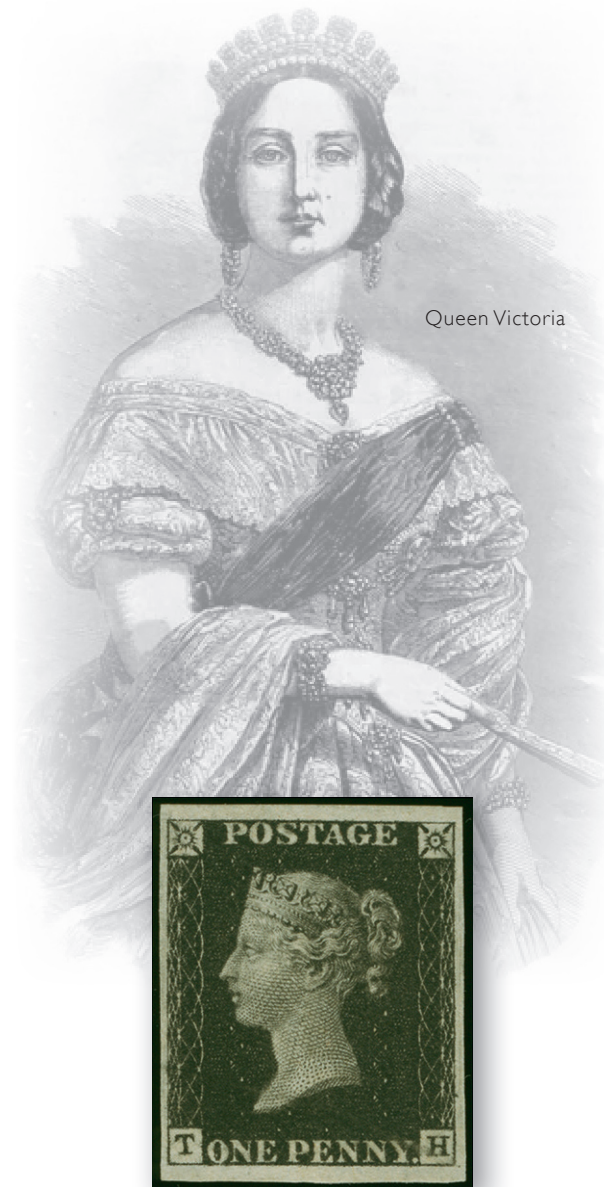
315• 2



1d. black, plate 6, DH, large and regular margins all round, tied by red Maltese Cross to entire, „Fore Street Hill / Penny Post“ and red „EXETER / NO 2 / PY. POST“ handstamps for dispatch on front, „BRISTOL NO 3 1840“ cds for arrival on reverse. (S.G.Cat.: GBP 775)

Remark: The content (transcript attached) relates to the famous Steam Ship „GREAT WESTERN“ based in Bristol at the time, if the Steamer will lay up for the Winter months, or if she continues to sail during winter time. An interesting document for collector of Postal & Social History relating to the largest Steamship at the time, the famous GREAT WESTERN.

250



Lot No. SG No.
316• 2 Imprimatur (★)
matur

1d. black, plate 8, TH, Imprimatur with large to very large margins all round, light horizontal crease in the margin at the top not touching design, very rare, only one Imprimatur sheet taken with just 23 singles removed, many of which are in institutional collections, the formerly adjoining 1d, TG, resides in the Tapling Collection (British Library). (S.G.Cat.: GBP 18.000)

Provenance: De La Rue Imprimatur collection (1883)

Board of Inland Revenue, Robson Lowe, 17 December 1975, lot 1200

,DAISY' Collection (Henry Grand), Christies, 8 Oct. 1996, lot 295

,Golden' Collection, Grosvenor, 9 Nov. 2015, lot 16

John W. Phillips Collection, Stanley Gibbons, 18 July 2023, lot 48

Start price

5000



Lot No. SG No.

317• 2



1d. black, plate 8, a superb pair, IK-IL, with good to large margins all round, tied by red Maltese Crosses to entire (written on black edged mourning paper inside), endorsed „Paid“ on front at upper left, London „4 JA 1841“ for dispatch and „BRIGHTON JA 5 1841“ (for arrival) handstamps on reverse. A striking cover! Silvano Sorani certificate (1991) (S.G. Cat. approx. GBP 2.500)

Start price

500



J.B. Seymour



318• 2, 7



1d. black and 1d. red-brown, plate 11, two horizontal pairs lettered DC-DD, variety „left corner letter D shows slight doubling on DD“, both pairs with good to large margins all round, each showing trace of adjoining stamp at right, cancelled with black Maltese Crosses. The black pair with insignificant vertical crease through DD, an incredible and unique matched pair, the only such „Matched Pair of Pairs“ recorded in the Karl Louis Card Index. (S.G. Cat. GBP 12.300)

Provenance: J.B. Seymour Collection, Robson Lowe, 7 November 1951, lot 279 (1d. black pair)

Robson Lowe, 12 April 1967, lot 618 (1d. black pair)

Cawardine Collection, Christies, 20 September 2001, lot 1471 (the matched pair)

4500

1840, Official Issues, VR One Penny Black, plate A (never issued)

The Houses of Parliament in London



Lot No. SG No.
319• VR1 Im- (★)
primatur

Official Stamp (Never issued): 1840, VR 1d. black, NL, Imprimatur from the First Registration sheet (before hardening), large margins all round showing small part sheet margin on the right, R.P.S.L. certificate (2010) wrongly stating ,after hardening' (= Second Registration sheet) because the VR 1d. black Imprimatur lettered NL is still present on the Second Registration sheet, an earlier R.P.S.L. certificate numbered ,66313' (issued 1968) is unfortunately lost (S.G. Cat.: GBP 20.000)

Provenance: Bonhams, 17 – 18 Febr. 2004, lot 1330 (mentioning R.P.S.L. cert. (1968) offered as a normal printing)

Start price

7500

THE ONE PENNY BLACK „VR“ OFFICIAL

Richard Frajola

High quality images of the fronts and backs of the actual registrations sheets of early Great Britain line engraved stamps are now available online. These can be found on the Great Britain Philatelic Society website (GBPS.org.uk) and the actual sheets are held by the British Postal Museum.

Unfortunately, much of the earlier philatelic literature regarding the registration dates of the various imprimatur sheets has been incorrect. The VR Official plate was prepared before the standard Penny Black, but the actual registration of its first sheet took place the same day as Plate 1 of the Penny Black — April 15, 1840.



Cropped image of the „VR“ plate A registration sheet showing the positions adjacent to the corner copy with „CP“ manuscript initials. The top and side margins are a perfect fit into the multiple. The reverse of this sheet shown below includes the endorsement of Charles Pressly.

The Impression on the other side of this paper of the Die or Plate intended to be used by the Commissioners of Stamps & Taxes in pursuance of the several powers and authorities vested in them for expressing and denoting the Stamp duty of one penny on the postage of Letters was taken in my presence and in the presence of a Commissioner the 15 day of April 1840

Chas Pressly
Secy

„The impression on the other side of this paper of the Die or Plate intended by the Commissioners of Stamps & Taxes in pursuance of the several powers and authorities vested in them for expressing and denoting the Stamp duty of one penny for the postage of Letters was taken in my presence and in the presence of a Commissioner the 15th day of April 1840.

Chas. Pressly, Secy.“



The Stamp Office floor
in Somerset House



Sir Cyril Humphries



Lot No. SG No.
320• VR1 Im-primatur (★)

Start price

Official Stamp (Never issued) 1840, VR 1d. black, TA, Imprimatur from the lower-left corner of the (before hardening) sheet with Plate Letter 'A', inscription and pen initials „C.P.“, slight thinning in margin and slight vertical crease, otherwise fine. One of the most important items in the history of the invention of Postage Stamps: The World's First Postage Stamp that was prepared but not issued! For the other imprimatur (first printing of the world's first postage stamp) registered on 15 April 1840, see lot 303).

Note: Two Imprimatur sheets were registered on 15 April and 9 May 1840. From both sheets the lower left stamp TA has been removed, of which the other is housed in the Royal Collection of His Majesty King Charles III.

The manuscript initials „C P“ are of Charles Pressly, Secretary of the Stamp Office. He endorsed on the reverse of the First Registration Sheet, were this VR 1d. black, TA was removed: „The impression of the other side of this paper of the Die or Plate, intended by the Commissioners of Stamps & Taxes in pursuance of the several powers and authorities vested in them for expressing and denoting the Stamp duty of one penny for the postage of Letters was taken in my presence and in the presence of a Commissioner the 15th. Day of April 1840, Chas. Pressly, Secy.“ The manuscript note proves, that this corner sheet single originates from the first printed sheet of the first (re-jected) unissued postage stamp in the world.

Provenance: Leonard H. Clark Collection, Robson Lowe, 29 May 1946, lot 9

„Chartwell“ collection, Spink, 16 February 2012, lot 208

Simon Beresford-Wylie Collection, 346. Corinthila Auction, 26 Nov. 2024, lot 2002

35000

1840, Two Pence Blue, Plate 1 and 2

View of Edinburgh



Lot No. SG No.

321• 5

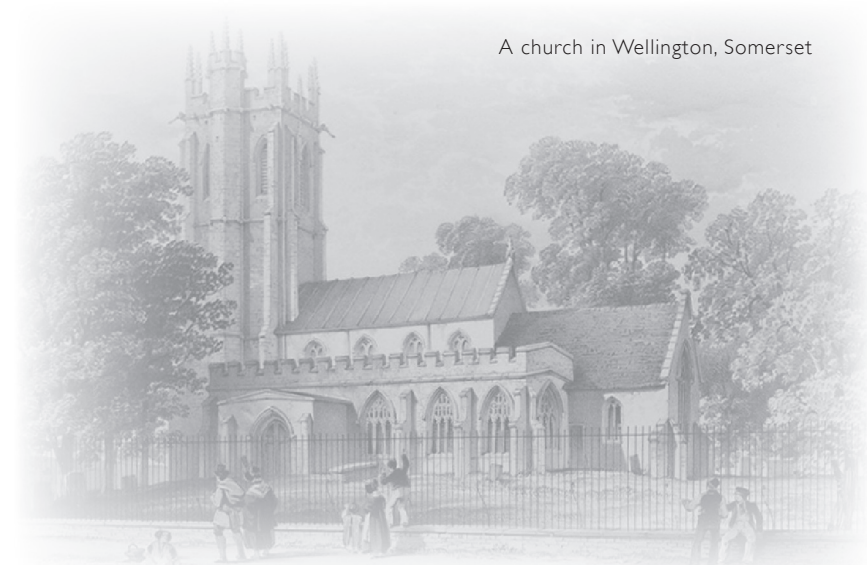


2d. blue, plate 1, KJ, large to very large and regular margins all round, tied by a red Maltese Cross to double weight entire letter, Edinburgh „JAN 5 1841“ datestamp for dispatch on reverse, addressed to Meigle, stunning fresh and of finest possible quality. R.P.S.L. certificate (1984) (S.G. Cat. GBP 2.500)

Start price

400

A church in Wellington, Somerset



Lot No. SG No.

322• 5



2d. blue, plate 1, PB, large margins all round tied by red Maltese Cross to entire,, „WELLINGTON SOMERSET NO ... 1840“ c.d.s. for dispatch on front with missing day-slug and year 1840 inserted inverted, to Tiverton, the 2d. with small corner crease at lower left re-affixed for protection and left side flap of entire missing, otherwise in a very fresh state of preservation. (S.G. Cat. GBP 2.500)

Start price

300

THOMAS MACLEAR (1794 – 1878) – STAR-GAZER AND LETTER SAVER

Thomas Maclear was a remarkable astronomer from Ireland who became Her Majesty's astronomer for the Cape of Good Hope. He was born in 1794 and had a passion for astronomy from a young age, which led to a long relationship with the Royal Astronomical Society.

In 1833, he was appointed as Her Majesty's Astronomer at the Cape of Good Hope. One of his most significant projects was a detailed survey between 1841 and 1848 to remeasure the shape of the Earth. He even had a beacon built on top of Table Mountain to help with this important work.

Maclear was also a close friend of the famous explorer David Livingstone, and they shared an interest in exploring Africa. He received a pension in 1863 but didn't fully retire until 1870. He passed away in 1878 at the age of 85 and is buried next to his wife on the grounds of the Royal Observatory.

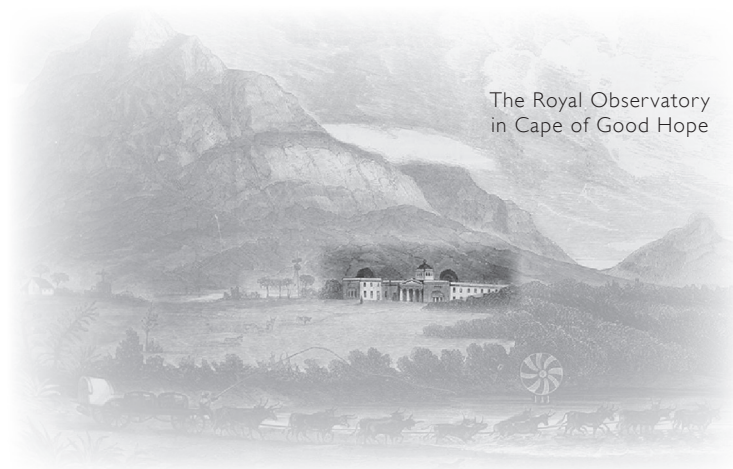
He also holds a special place in the hearts of stamp collectors. He saved some of the most important foreign letters from the world's first stamp issue. By preserving this correspondence, he became an immortal figure in the world of stamp collecting.

Text and portrait supported by Wikipedia.org



Thomas Maclear





The Royal Observatory
in Cape of Good Hope



Dr. Chan Chin
Cheung

Lot No. SG No.

323• 5



2d. blue, plate 1, strip of four, LG-LJ, with large balanced margins all round, cancelled with four superb strikes of a black Maltese Cross, paying the 8d. outbound rate for a Ship Letter from the famous „Thomas Maclear, Royal Observatory, Cape of Good Hope“ correspondence, „APR 16 1842“ (Edinburgh) for dispatch, „18 APR 1842“ (London Foreign Branch) in transit on reverse and „PAID SHIP LETTER LONDON 18 AP 1842“ in red on front. A fantastic and ‚eye catching‘ Foreign Destination cover of the 1840, 2d. blue, one of just three such Ship Letters to the Cape recorded in the Karl Louis Card Index, all three being mailed between 14th and 18th April 1842, this being the only cover with a strip of four, the other two franked with the matching blocks of four B.P.A. certificate (2006)

Provenance: Dr. Chan Chin Cheung Collection, H.R. Harmer, London, 29 May 1961, lot 79
Wills Collection, Harmer, 7 November 1989, lot 435 (mentioning ‚D.C. Gray‘ Collection as a further provenance)

Start price

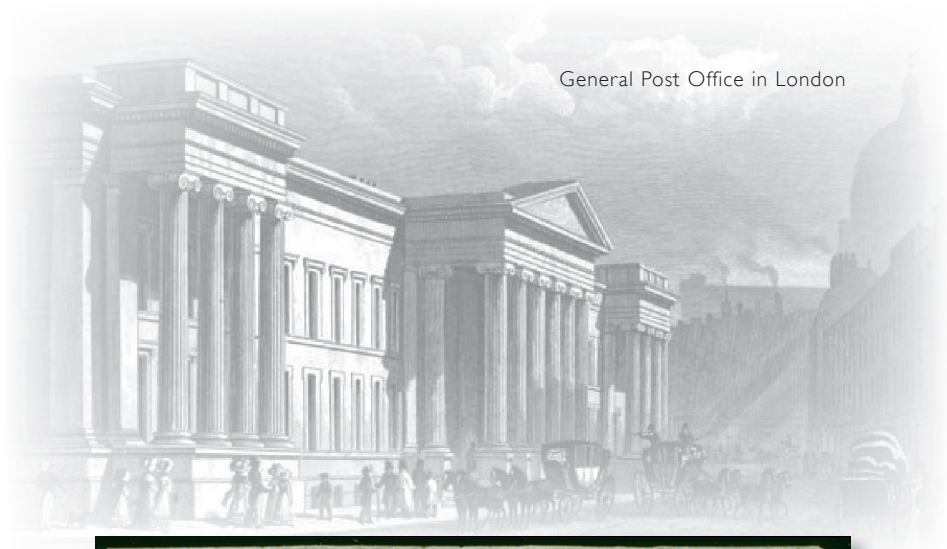
10000



Interior of the Excise Office in London



Lot No.	SG No.		Start price
324•	5	★ 1840, 2d. blue, plate 2, horizontal pair, NH-NI, unused with part original gum, close but not touched at upper right corner, otherwise with large to very large margins all round, stunning vibrant colour, two slight horizontal creases nearly invisible from the front. A magnificent and very rare mint multiple from plate 2, one of the very few recorded unused items from the 2d. plate 2 not originating from the (ungummed and very defective) block, HA/NL, in the Mackay Collection (1898) which was cut up during the last 125 years into singles and smaller multiples. (S.G. Cat.: GBP 100.000) <i>Provenance: Sidney H. Carter Collection, Harmer, 4 – 5 February 1946, lot 19 (then described „....brilliant part o.g. horizontal pair,.....slight crease but very fine“).</i>	15000



General Post Office in London



Lot No. SG No.

325• 5

△/ 田 2d. blue, plate 2, block of four, QK/RL, mostly large regular margins all round, only RK cut close at the upper left and minute scissor cut at left between stamps QK and RK, tied with black Maltese Crosses to small piece, a very rare multiple from plate 2, B.P.A. certificate (1996) (S.G. Cat. GBP 22.000)

Provenance: Harmer, 19 February 1935, lot 292

,Daisy' Collection (Henry Grand), Christies, 8 October 1996, lot 454

M.A.Sayeed Collection, Spink, May 2002, lot 2329

Start price

2500

1841, One Penny Red, printed from "Black Plates" 1, 2, 5, 8-11



Lot No. SG No.

326• 7



1d. red-brown, „Black Plate“ 2, LD, good to large margins all round, tied by black Maltese Cross to entire from Edinburgh „9 MAY 1841“ via London „10 MY 1841“ addressed (in error) to St. Lewes, very rare handstamp „MISSENT TO TRURO“ in blue and ms. „St. Ives“, on front „TRURO MY 12 1842“ cds. in blue on reverse. (S.G.Cat. GBP 550 (for 1d. red plate 2))

Start price

150



E. H. Williams

Major-General
Sir Frederick Gwatkin

Sir Cyril Humphries



Lot No. SG No.

327• 7

★★/
★

1d. red-brown, 'black plate' 10, QA / TD, a mint corner marginal block of sixteen showing Plate number '10' and marginal inscription, variety „Check Letters ‚P‘ converted into ‚R‘ by hand engraving on RA, RB, RC and RD, and TA re-entry, QA, QD and RA with large part, others with full original gum, a very fresh, stunning and important mint multiple. B.P.A. certificate (2013) (S.G. Cat. GBP 50'000 (as four blocks of 4))

Provenance: E. H. Williams Collection, Harmer, 3–4 Feb 1938, lot 802 (as part of a complete sheet)
Robson Lowe, 26 July 1950, lot 158 (as the block of 16)

Major-General Sir Frederick Gwatkin Collection, Robson Lowe, 19 February 1960, lot 376
, Chartwell' Collection, Spink, 12 December 2012, lot 332

Start price

20000



John Dickinson



Sir Rowland Hill



Lot No.	SG No.		Start price
328•	DP22	(★) 1d. red-brown, Plate 11, Trial Printing on Dickinson Silk Thread Paper, LE-LF, a magnificent unused pair without the usual heavy creasing normally seen on these rare trials, of which only one part sheet (A- to Q- rows) survived from the Rowland Hill Estate. The sheet was exhibited in London in 1881 (ref. Kohl Handbook, written by J.B. Seymour). The part sheet was cut up before January 1892 as a pair was shown at a Manchester Philatelic Society meeting as a 'novelty'. (S.G.Cat. GBP 9.500) <i>Provenance: Rowland Hill Estate (1879)</i> <i>Exhibited in London 1881 (incorporated in a sheet or part sheet)</i> <i>David Feldman, 3 – 8 November 1996, lot 21952</i>	2000

Pick of the Pack

THE FASCINATION OF THE CORNER 'PLATE NUMBER' IMPRIMATURS

Whenever a printing plate was finished, an impression in the colour of the issued stamp was delivered to Somerset House for final approval. The accepted sheet was then placed in the archives and later became known by collectors as the "Imprimatur sheets". The Imprimatur sheets mainly represent the most beautiful and earliest impressions of a line engraved printing plate. An artwork 'en miniature'!

From time to time a few copies have been cut from these Imprimatur sheets, mainly for presentation purposes. Of the highest importance are those Imprimaturs from the corners of the sheets showing full sheet margins, part of the sheet marginal inscription and the "Plate Number".

On 29 May 1946, Robson Lowe offered a complete set of Imprimaturs by auction. They had come from the late Leonard H. Clark collection and had never been offered on the philatelic market before. In the preface to the 1946 Leonard H. Clark Imprimatur set auction catalogue, Robson Lowe described in detail the history of the sheet corner plate number Imprimaturs, which today enables us to identify the provenance of them:

"About 1900, three of the corner copies from each Imprimatur sheet were cut and made up into presentation sets;

one for the H.R.H. The Duke of York (later King George V) which still rests in the Royal Collection;

one for the late Lord Crawford which later passed into the collection of Col. A. S. Bates and subsequently was offered in a number of lots by auction in 1934;

one for the late Leonard H. Clark. This last set did not change hands until the death of the owner in 1944."

Based on the information given by Robson Lowe, it can be stated:

- From each Imprimatur sheet only two corner copies can be in private hands, whilst the third corner copy is still in the Royal collection. The fourth corner Imprimatur remains attached to each original Imprimatur sheet.
- All corner plate number Imprimaturs offered before the 1946 Leonard Clark sale are graded with the most important provenances "ex Earl of Crawford" and "ex Col. A.S. Bates".
- All corner plate number Imprimaturs offered on the stamp market after 1946 must originate either from the Crawford and Bates collections or alternatively, from the Clark collection.
- Corner plate number Imprimatur letterings not offered in the Bates collection (1934) therefore must originate from the Clark collection and vice versa.





Lot No. SG No.

Start price

329• 8 Impri- (★)
matur

1d. dark red-brown (chocolate shade), Imprimatur, plate 15, TA, lower left corner sheet marginal with inscription and plate number ,15', good to large margins, light vertical crease as can be frequently seen on the Imprimatur sheet corners, exceptional fresh deep-brown shade
Provenance: Leonard H. Clark Collection, Robson Lowe, 29 May 1946, lot 13.

800



Sir Cyril Humphries

330• 8 Impri- (★)
matur

1d. red-brown, Imprimatur, plate 33, AA, upper left corner sheet marginal with inscription and plate number ,33', large margins all round, very fresh.

*Provenance: Leonard H. Clark Collection, Robson Lowe, 29 May 1946, lot 29.
 Harmer, 26 January 1994, lot 574
 ,Chartwell' Collection, Spink, 12 December 2012, lot 356*

700

331• 8 Impri- (★)
matur

1d. red-brown, Imprimatur, plate 34, AA, upper left corner sheet marginal with inscription and plate number ,34', large margins all round, very fresh.

*Provenance: Leonard H. Clark Collection, Robson Lowe, 29 May 1946, lot 30.
 ,Chartwell' Collection, Spink, 26 June 2011, lot 1221 (offered as a rejoined pair with the 1d.AB)*

700



Lot No. SG No.
332• 8 Imprimatur (★)

1d. red-brown, Imprimatur; plate 35, AA, upper left corner sheet marginal with inscription and plate number ,35', large margins all round, very fresh.

*Provenance: Leonard H. Clark Collection, Robson Lowe, 29 May 1946, lot 31.
,DAISY' Collection, Christies, 8 October 1996, lot 474.*

Start price

700



333• 8 Imprimatur (★)

1d. red-brown, Imprimatur; plate 51, AA, upper left corner sheet marginal with inscription and plate number ,51', large margins all round, very fresh.

*Provenance: Leonard H. Clark Collection, Robson Lowe, 29 May 1946, lot 47.
,Chartwell' Collection, Spink, 16 February 2012, lot 270*

700



Earl of Crawford



Colonel A.S. Bates

334• 8 Imprimatur (★)

1d. red-brown, Imprimatur; plate 51, AL, upper right corner sheet marginal with inscription and plate number ,51', large margins all round, very fresh and attractive.

*Provenance: Earl of Crawford Collection (1913)
Col.A.S. Bates Collection, Harmer, 3-5 December 1934, ex lot 509
Heath Collection, Robson Lowe, 14 February 1962, lot 210
,Chartwell', Spink, 5 July 2012, lot 296*

700



Lot No. SG No.

Start price

335• 8 Impri- (★)
matur

1d. red-brown, Imprimatur, plate 108, TA, lower left corner sheet marginal with inscription and plate number ,108', large margins all round, very fresh.

Provenance: Leonard H. Clark Collection, Robson Lowe, 29 May 1946, lot 100.

700



Earl of Crawford



Colonel A.S. Bates

336• 8 Impri- (★)
matur

1d. red-brown, Imprimatur, plate 125, AL, upper right corner sheet marginal with inscription and plate number ,125', large margins all round, very fresh.

*Provenance: Earl of Crawford Collection (1913)**Col. A.S. Bates Collection, Harmer, 3-5 December 1934, ex lot 521**Robson Lowe, 30 May 1940, lot 54**,Verus' Collection, Stanley Gibbons, August 2015, lot 62*

700



Earl of Crawford



Colonel A.S. Bates

337• 8 Impri- (★)
matur

1d. red-brown, Imprimatur, plate 143, AL, upper right corner sheet marginal with inscription and plate number ,143', large margins all round, very fresh.

*Provenance: Earl of Crawford Collection (1913)**Col. A.S. Bates Collection, Harmer, 3-5 December 1934, ex lot 523**Harmer, 8 December 1983, lot 1553**,Chartwell', Spink, 16 February 2012, lot 348*

700



Earl of Crawford



Colonel A.S. Bates

Lot No.	SG No.		Start price
338	8 Imprimatur	(★) 1d. red-brown, Imprimatur, plate 146, AL, upper right corner sheet marginal with inscription and plate number ,146', large margins all round, very fresh. <i>Provenance: Earl of Crawford Collection (1913) Col.A.S. Bates Collection, Harmer, 3-5 December 1934, ex lot 523 Charles Williams Collection, Harmer, 10-18 November 1947, lot 169 Harmer, 26 January 1994, lot 617 ,Chartwell', Spink, 12 December 2012, lot 442</i>	700



339



340

Major-General
Sir Frederick Gwatkin

339	8 Imprimatur	(★) 1d. red-brown, Imprimatur, plate 148, AL, upper right corner sheet marginal with inscription and plate number ,148', large margins all round, very fresh. <i>Provenance: Earl of Crawford Collection (1913) Col.A.S. Bates Collection, Harmer, 3-5 December 1934, ex lot 523</i>	700
340	8 Imprimatur	(★) 1d. red-brown, Imprimatur, plate 158, AL, upper right corner sheet marginal with inscription and plate number ,158', large margins all round, very fresh. <i>Provenance: Earl of Crawford Collection (1913) Col.A.S. Bates Collection, Harmer, 3-5 December 1934, ex lot 528 Major-General Sir Frederick Gwatkin C.B. Collection, Robson Lowe, 10 February 1960, lot 394 ,Chartwell', Spink, 5 July 2012, lot 379</i>	700



General Post Office
in London



Lot No. SG No.

Start price

341• 8 SPECI- ★★/
MEN ★

1d. red-brown, plate 90, handstamped 'SPECIMEN', corner sheet marginal block of 18, AA / BI, showing marginal inscription and plate number '90', the block showing the characteristic re-cut frame lines on this plate and the blind 'A's in the first vertical column, excellent vibrant colour, two vertical creases as can be expected and a few minor thins not affecting the dramatic appearance! Fresh and fine with large part or unmounted original gum. Illustrated (as a block AA / CI) in „Specimen Stamps & Postal Stationery of Great Britain“ by Marcus Samuel and Alan Huggins on page 17. A spectacular and wonderful multiple (S.G. Cat. GBP 36.000)

Note: The existence of the 1841, 1d. red-brown and 2d. blue handstamped SPECIMEN was first reported in THE BRITISH PHILATELIST in March 1934 when „.....quite recently a block of thirty-one of the One Penny and a block of thirty of the Two Pence, plate 3, turned up (.....) which have not hitherto been known overprinted specimen“. „Specimen“ overprinted sheets of the 1d. and 2d. have been sent on request of the Prussian, Austrian and Neapolitan Post Offices in 1849 as samples, when these countries were planning to issue first adhesive postage stamps similar as the British Post Office. Entire sheets of the 1d. red-brown, plate 88, and 2d. blue, plate 3, overprinted SPECIMEN sent to Prussia are still in the National Heritage Stamp Collection of the National Postal Museum in Berlin

Provenance: Spink, 3 June 1999, lot 1370 (as a block of 27)

„BESANCON“ Collection, Corinthia, 7 September 2020, lot 3025 (as a block of 27)

10000



Harvey, Hayle Foundry



Lot No. SG No.

342• 8



1d. red-brown, plate 20, RB, large margins all round, centrally cancelled with the blue Truro Maltese Cross, „TRURO FE 2 1842“ c.d.s. on front for dispatch, addressed to Hayle, a fine cover from the „Harvey, Hayle Foundry“ correspondence. (S.G.Cat. GBP 1.700)

Note: The Philips Collection. N.P.M. London, contains four covers with blue Maltese Crosses from the „Harvey, Hayle Foundry“ correspondence, dated 4 Jan. 1842, 21 Febr. 1842, 25 Febr. 1842 and 10 May 1843.

Provenance: ‚Cyriax‘ Collection, Stanley Gibbons 1 Nov. 2023, lot 119

Start price

250



343• 8



1d. red-brown, plate 133, TL, the lower right corner with sheet margins showing part inscription and plate number ‚133‘, unused with traces of original gum, exceptional and wonderful appearance. B.P.A. certificate (2001)*Note: The 1d. with corner sheet margins displays very well the chemical reaction of the fugitive red-brown printing ink introduced in 1841 colouring the greyish white paper made by Stacey Wise of Rush Mills to bluish.*

Provenance: McIntyre Collection (as part of a corner block of four SK / TL), Robson Lowe, 28 March 1856, lot 310

Stanley Gibbons, 8 -9 November 1973, lot 258

Cawardine Collection, Spink, 20 September 2001, lot 1575

600

1841, Two Pence Blue, plate 3 and 4



Lot No. SG No.

344• DP43

(★)

1841, 2d. blue, printing from the small Trial Plate of 12 Impressions without letters in the lower corners, a complete sheet with upright watermark 'Small Crown' and corner sheet watermark lines on the right and the bottom, outstanding colour and freshness. (S.G.Cat. GBP 17.500)

Note: The first 2d. plate of the new design with white lines below POSTAGE and above TWO PENCE was not ready when specimens were required for distribution with the announcement of the new issue on Postal Notices. Therefore a provisional small plate with 12 impressions without corner letters was made. The printings from this provisional small plate were carried out on the large sized sheets of watermarked paper used for the regular 1d. and 2d. printings from the large plates of 240 impressions.

Start price

4000



Lot No. SG No.

345• 14

★★/
★

2d. blue, plate 3, FA / GD, an unused block of eight, each stamp overprinted SPECIMEN, ample to large margins all round, sheet marginal at left with imprint „Back be careful not to remove the Ce(ment)“, GD with ‚Double Letter‘ variety, of outstanding colour and freshness. Full unmounted original gum, a truly magnificent and spectacular multiple for the Line Engraved connoisseur. Many of the surviving copies are heavily creased and/or oxidized. This block is the nicest multiple the collector could find and had the desire to own. (S.G.Cat. GBP 42.000)

Remark: The existence of the 1841, 1d. red-brown and 2d. blue handstamped SPECIMEN was first reported in THE BRITISH PHILATELIST in March 1934 when „.....quite recently a block of thirty-one of the One Penny and a block of thirty of the Two Pence, plate 3, turned up (.....) which have not hitherto been known overprinted specimen“. ‚Specimen‘ overprinted sheets of the 1d. and 2d. have been sent on request of the Prussian, Austrian and Neapolitan Post Offices in 1849 as samples, when these countries were planning to issue first adhesive postage stamps similar as the British Post Office. Entire sheets of the 1d. red-brown, plate 88, and 2d. blue, plate 3, overprinted SPECIMEN sent to Prussia is still in the National Heritage Stamp Collection of the National Postal Museum in Berlin.

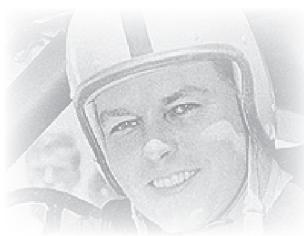
*Provenance: Heinrich Köher, Wiesbaden, September 2006, lot 868
„Forrester‘ Collection (2008)*

Start price

12000



John O. Griffiths



Sir Gawaine Baillie



Lot No. SG No.

Start price

346• 13 Impr. (★)

2d. deep blue, Imprimatur, plate 3, SH, small to large margins all round, fine and extremely fresh. (S.G.Cat. GBP 12.000)

Provenance: Harmer, 16-19 February 1970, lot 347

John O. Griffiths Collection, Robson Lowe, 29 September 1982, lot 202

Christies London 1990 Rarities Auction, 9 May 1990, lot 5

Sir Gawaine Baillie Collection, Sotheby's, 29 Sept. – 1 Oct. 2004, lot 132

2000



Sir Gawaine Baillie



347• 14

★

2d. blue, plate 3, MA/NB, block of four with large regular margins all round and full deckle edge sheet margin on the left with inscription, unused with large part original gum (slight diagonal gum crease not visible on front), very fresh and attractive multiple. (S.G.Cat. GBP 35.000)

Provenance: Christies, 6 September 1988, lot 1346

Sir Gawaine Baillie Collection, Sotheby's, 29 Sept. – 1 Oct. 2004, lot 133

5000



Queen Victoria



Lot No.	SG No.		Start price
348•	13 Impri- matur (★)	<p>2d. blue, Imprimatur, plate 4, AI, with upper sheet margin and inscription, large margins all round, extremely fresh and highly attractive. (S.G.Cat. GBP 12.000)</p> <p><i>Provenance: Robson Lowe, 27 April 1949 („Great Britain Queen Victoria Imprimaturs Complete Collection“)</i></p> <p><i>Robson Lowe, 19 January 1966, lot 708</i></p> <p><i>Phillips, 3 September 1987, lot 369</i></p> <p><i>Phillips, 11 July 1991, lot 317 (in a re-joined pair with AJ Imprimatur)</i></p>	2200

1854, One Penny Red, Die I, Plates 178–206 and Reserve Plates R1–R14



349



350

Lot No.	SG No.		Start price
349•	17 Impri- (★) matur	1d. red-brown, Imprimatur, die I, alphabet II, plate 182,AA, imperforate upper left corner sheet marginal with inscription and plate number ,182', large margins all round, very fresh. <i>Provenance: Leonard H. Clark Collection, Robson Lowe, 29 May 1946, lot 160. ,Chartwell' Collection, Spink, 12 December 2012, lot 492</i>	700
350•	17 Impri- (★) matur	1d. red-brown, Imprimatur, die I, alphabet II, plate 189,AL, imperforate upper right corner sheet marginal with inscription and plate number ,189', large margins all round, very fresh. <i>Provenance: Earl of Crawford Collection (1913) Col.A.S. Bates Collection, Harmer, 3-5 December 1934, ex lot 535 Phillips 26 October 1995, lot 237 ,Chartwell', Spink 16 February 2012, lot 403</i>	700



Earl of Crawford



Colonel A.S. Bates

351•	17 Impri- (★) matur	1d. red-brown, Imprimatur, die I, alphabet II, plate 190,TL, imperforate lower right corner sheet marginal with inscription and plate number ,190', large margins all round, very fresh. <i>Provenance: Earl of Crawford Collection (1913) Col.A.S. Bates Collection, Harmer, 3-5 December 1934, ex lot 535 Phillips, 26 October 1995, lot 238 ,Chartwell', Spink, 16 February 2012, lot 404</i>	700
------	------------------------	---	-----



Earl of Crawford



Colonel A.S. Bates



Sir Cyril Humphries



352



353

Lot No.	SG No.		Start price
352•	17 Impri- (★) matur	1d. red-brown, Imprimatur, die I, alphabet II, plate 194, TL, imperforate lower right corner sheet marginal with inscription and plate number ,194', large margins all round, very fresh. <i>Provenance: Earl of Crawford Collection (1913) Col. A.S. Bates Collection, Harmer, 3-5 December 1934, ex lot 535 Phillips, 26 October 1995, lot 242 ,Chartwell', Spink, 12 December 2012, ex lot 499</i>	700
353•	17 Impri- (★) matur	1d. red-brown, Imprimatur, die I, alphabet II, plate 197, TA, imperforate lower left corner sheet marginal with inscription and plate number ,197', large margins all round, very fresh. <i>Provenance: Leonard H. Clark Collection, Robson Lowe, 29 May 1946, lot 170.</i>	700

Major-General
Sir Leonard Atkinson

354

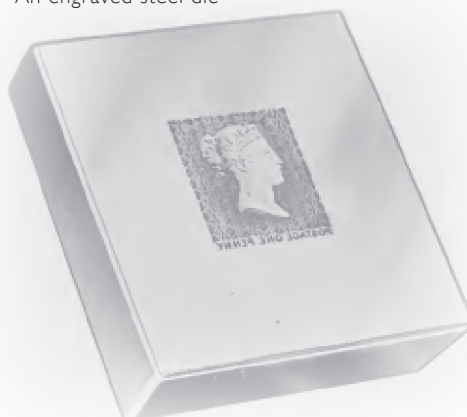


355

354•	17 Impri- (★) matur	1d. red-brown, Imprimatur, die I, alphabet II, plate 204, AA, imperforate upper left corner sheet marginal with inscription and plate number ,204', large margins all round, light vertical natural pre-printing fold or wrinkling as can often be seen on Imprimatur sheet corners, very fresh. <i>Provenance: Leonard H. Clark Collection, Robson Lowe, 29 May 1946, lot 174. Robson Lowe, 24-25 September 1969, lot 1449 Major-General Sir Leonard Atkinson K.B.E. Collection. Christies, 6 November 1990, lot 242 ,Chartwell' Collection, Spink 12. December 2012, lot 505</i>	700
355•	17 Impri- (★) matur	1d. red-brown, Imprimatur, die I, alphabet II, Reserve plate 1 (R1), AG, imperforate upper sheet marginal with inscription and ,pinning mark' (for perforation machine), large margins all round, very fresh. (S.G.Cat.: GBP 1.000) <i>Provenance: Phillips, 2 September 1993, lot 252</i>	200

1855, One Penny Red, Die II, Plates 1–68, Reserve Plates 15–20

An engraved steel die



Sir Cyril Humphries



Åke Rietz



Lot No. SG No.

356• DP33b (★)

(1854), 1d. black, so called 'Secondary Die', die II, with numeral '2' above the impression on thin yellowish-white paper; the reprint of 1890, paper split at top just into plate margin and a few corner creases clear of design. Most attractive, R.P.S.L. certificate (2016) (S.G.Cat. GBP 10.000)

Reference: Illustrated in Stanley Gibbons Specialised Stamp catalogue, vol. 1, part 1, (2020) on page 69

Provenance: Robson Lowe, 20 June 1956, lot 312

Robson Lowe, 21 November 1972, lot 11

'Chartwell' Collection, Spink, 5 July 2012, lot 52

Åke Rietz Collection, 299th. Corinphila, 7 June 2023, lot 3415

Start price

3000



Earl of Crawford



Colonel A.S. Bates

Lot No.	SG No.	Start price
357•	21 Impri- matur (★)	<p>1d. red-brown, Imprimatur, die II, alphabet II, watermark 'Small Crown' plate 14, AL, imperforate upper right corner sheet marginal with inscription and plate number '14', large margins all round, very fresh.</p> <p><i>Provenance: Earl of Crawford Collection (1913)</i> <i>Col. A.S. Bates Collection, Harmer, 3-5 December 1934, ex lot 541</i> <i>'Chartwell', Spink, 29 June 2011, lot 1321</i></p>
		700



Sir Cyril Humphries



358



359

358•	21 Impri- matur (★)	<p>1d. red-brown, Imprimatur, die II, alphabet II, watermark 'Small Crown' plate 15, AL, imperforate upper right corner sheet marginal with inscription and plate number '15', large margins all round, very fresh.</p> <p><i>Provenance: Earl of Crawford Collection (1913)</i> <i>Col. A.S. Bates Collection, Harmer, 3-5 December 1934, ex lot 541</i> <i>'Chartwell', Spink, 29 June 2011, lot 1322</i></p>	700
359•	21 Impri- matur (★)	<p>1d. red-brown, Imprimatur, die II, alphabet II, watermark 'Small Crown' plate 16, AA, imperforate upper left corner sheet marginal with inscription and plate number '16', very fresh.</p> <p><i>Provenance: Leonard H. Clark Collection, Robson Lowe, 29 May 1946, lot 204.</i> <i>Robson Lowe, 11 December 1946, lot 267</i> <i>'Chartwell' Collection, Spink, 29 June 2011, lot 1323</i></p>	700



Earl of Crawford



Colonel A.S. Bates



J.B. Seymour

Lot No.	SG No.		Start price
360•	C7 Im-primatur (★)	<p>1d. red-brown, Imprimatur, die II, alphabet III, watermark ‚Small Crown‘, plate 24, AL, imperforate upper right corner sheet marginal with inscription and plate number ‚24‘, large margins all round, very fresh and rare, just three plates 22,24 and R20 with alphabet III, were registered with watermark ‚Small Crown‘.</p> <p><i>Provenance: Earl of Crawford Collection (1913)</i> <i>Col.A.S. Bates Collection, Harmer, 3-5 December 1934, ex lot 542</i> <i>J.B.Seymour Collection, Robson Lowe, 6 June 1951, ex lot 850</i> <i>‚Verus‘ Collection, Stanley Gibbons, August 2015, lot 84</i></p>	700



361



362

361•	29 Impri-matur (★)	<p>1d. red-brown, Imprimatur, die II, alphabet III, watermark ‚Large Crown‘, plate 28, AA, imperforate upper left corner sheet marginal with inscription and plate number ‚28‘, very fresh.</p> <p><i>Provenance: Leonard H. Clark Collection, Robson Lowe, 29 May 1946, lot 221.</i> <i>‚Chartwell‘ Collection, Spink, 12 December 2012, ex lot 525</i></p>	700
362•	29 Impri-matur (★)	<p>1d. red-brown, Imprimatur, die II, alphabet III, watermark ‚Large Crown‘, plate 40, AB, imperforate upper sheet marginal with inscription, very fresh and attractive. (S.G.Cat.: GBP 850)</p> <p><i>Provenance: ‚Golden‘ Collection, Grosvenor, 9 November 2015, ex lot 115</i></p>	150



Sir Cyril Humphries



363



364

Lot No.	SG No.		Start price
363•	29 Impri- matur (★)	1d. orange-red, Imprimatur, die II, alphabet III, watermark 'Large Crown', plate 52, AA, imperforate upper left corner sheet marginal with inscription and plate number '52', very fresh. <i>Provenance: Leonard H. Clark Collection, Robson Lowe, 29 May 1946, lot 243. ,Chartwell' Collection, Spink, 12 December 2012, ex lot 547</i>	700
364•	29 Impri- matur (★)	1d. orange-brown, Imprimatur, die II, alphabet III, watermark 'Large Crown', plate 55, AA, variety 're-entry', imperforate upper left corner sheet marginal with inscription and plate number '55', large margins, minor thinning in left margin not touching design, very fresh. <i>Provenance: Leonard H. Clark Collection, Robson Lowe, 29 May 1946, lot 245. ,Chartwell' Collection, Spink, 12 December 2012, ex lot 547</i>	700



Earl of Crawford



Colonel A.S. Bates

365•	29 Impri- matur (★)	1d. orange-brown, Imprimatur, die II, alphabet III, watermark 'Large Crown', plate 56, AL, imperforate upper right corner sheet marginal with inscription and plate number '56', large margins, very fresh. <i>Provenance: Earl of Crawford Collection (1913) Col. A.S. Bates Collection, Harmer, 3-5 December 1934, ex lot 549 Phillips, 22 April 1993, lot 210</i>	700
------	------------------------	---	-----



Lot No. SG No.

Start price

366• 29 Impr. (★)

1d. red-brown, Imprimatur, die II, alphabet III, watermark 'Large Crown', Reserve plate 19, JL, imperforate right sheet marginal with inscription and half Division Ornament, very fresh. Only 21 stamps were taken from the Imprimatur sheet, of which JI (N.P.M. London) and TL (Royal Collection) are unavailable for private collectors. Reserve plate 19 was completed in 1855, got imprimatur on 12 November 1855, then held in reserve but was until defacement never put to press. (S.G.Cat. GBP 1.500)

350



Earl of Crawford



Colonel A.S. Bates

367• 40 Impri- (★)
matur

1d. rose-red on white paper, Imprimatur, die II, alphabet III, watermark 'Large Crown', plate 63, AL, imperforate upper right corner sheet marginal with inscription and plate number '63', large margins, very fresh.

Provenance: Earl of Crawford Collection (1913)

*Col. A.S. Bates Collection, Harmer, 3-5 December 1934, ex lot 551
,Verus' Collection, Stanley Gibbons, August 2015, lot 97*

700

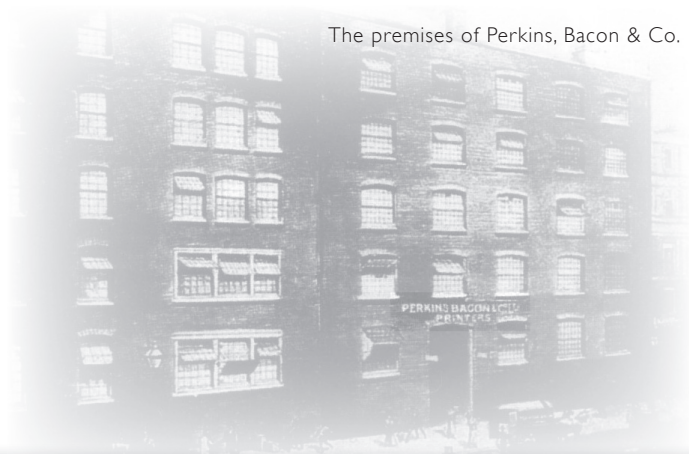
368• 40 Impri- (★)
matur

1d. rose-red on white paper, Imprimatur, die II, alphabet III, watermark 'Large Crown', plate 68, AL, imperforate upper left corner sheet marginal with inscription and plate number '68', large margins, very fresh.

Provenance: Leonard H. Clark Collection, Robson Lowe, 29 May 1946, lot 258.

,Verus' Collection, Stanley Gibbons, August 2015, lot 102

700



The premises of Perkins, Bacon & Co.



Lot No. SG No.
369• 29; C8h (★)

Start price

1855, 1d. red-brown, trial printing on Neales Steam Press, plate 22, EJ / GL, an imperforate large margined unused block of nine (top row creased) with full sheet margin on the right and inscription. The block originates from the unique ungummed sheet offered by Harmers in April 1957 was inscribed in ink on the bottom margin below the T-row: "This sheet is one of 2,000 printed by Mr. Neales machine for us this day, August 15, 1855". (S.G.Cat. 27'000)

Note: In 1855, Perkins Bacon conducted trials using Robert Neales patented steam printing press in an attempt to increase production speed. Plates 16-18, 22 and 25 were used.

Provenance: Harmers 29 – 30 April 1957, lot 54 (the complete sheet)

Robson Lowe, 10 May 1966, lot 261

5000



Prince Alfred, later Duke of Edinburgh,
and his elder brother Bertie,
later King Edward VII



Lot No. SG No.

370• DP35a ★

Start price

1865, 1d. black, the so called „ROYAL REPRINT“, die II, plate 66, block of four, MC / ND, with Watermark „Large Crown“ inverted, good to large margins, large part original gum, minor gum creasing, very fresh and attractive appearance. (S.G.Cat.: GBP 10.000)

Note: The story of the „Royal Reprints“ is, that an application was made upon request of the Royal Family for specimens of the One Penny Black and One Penny Red imperforate as being issued in 1840 and 1841. On September 1, 1865, Ormond Hill requested these stamp issues from Perkins Bacon and he was supplied with printings in black and rose-red from plate 66. The sheets must have been broken up quite early, because Philbrick & Westoby describe in 1881 an example in black lettered RH. All „Royal Reprints“ on the philatelic market originate from one sheet printed in black and a large part sheet in rose-red comprising stamps from the horizontal F- to T-rows.

Provenance: As part of a block of nine MC / OE:

115th. Edgar Mohrmann Auction, November 193, lot 1966

63rd. Corinphila, Zürich, 11 March 1980, lot 1910

As a block of four MC / ND:

Albert Matl Collection (2011)

2000



Lot No. SG No.

371• DP35a ★

Start price

1865, 1d. black, the so called „ROYAL REPRINT“, die II, plate 66, RB, with Watermark „Large Crown“ inverted, good to large margins, large part original gum, very fresh and attractive appearance. (S.G.Cat.: GBP 2.500)

Note: The story of the „Royal Reprints“ is, that an application was made upon request of the Royal Family for specimens of the One Penny Black and One Penny Red imperforate as being issued in 1840 and 1841. On September 1, 1865, Ormond Hill requested these stamp issues from Perkins Bacon and he was supplied with printings in black and rose-red from plate 66. The sheets must have been broken up quite early, because Philbrick & Westoby describe in 1881 an example in black lettered RH. All „Royal Reprints“ on the philatelic market originate from one sheet printed in black and a large part sheet in rose-red comprising stamps from the horizontal F- to T-rows.

400



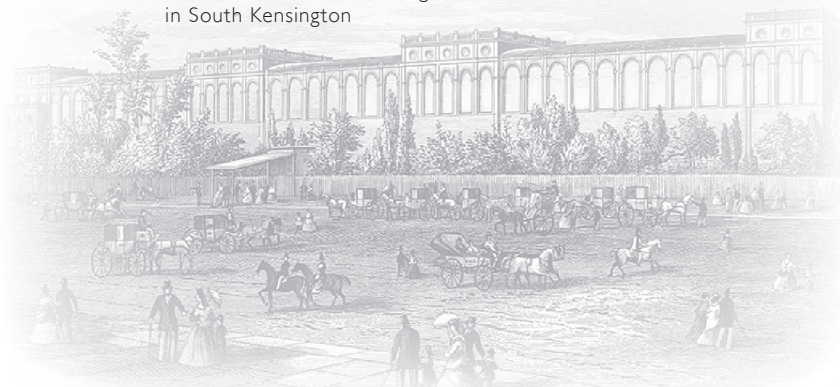
372• DP35b ★

1865, 1d. rose-red, the so called „ROYAL REPRINT“, plate 66, JA-KA, vertical pair with left sheet margin, inscription and full Division Ornament, Watermark „Large Crown“, very large margins, large part original gum, very fresh and attractive appearance. The only surviving multiple from the Royal Reprint, either in rose-red or black printing, with fully preserved Division Ornament. (S.G.Cat.: GBP 4.500)

Note: The story of the „Royal Reprints“ is, that an application was made upon request of the Royal Family for specimens of the One Penny Black and One Penny Red imperforate as being issued in 1840 and 1841. On September 1, 1865, Ormond Hill requested these stamp issues from Perkins Bacon and he was supplied with printings in black and rose-red from plate 66. The sheets must have been broken up quite early, because Philbrick & Westoby described already in 1881 an example in black lettered RH. All 1d. rose-red „Royal Reprints“ on the philatelic market originate from one large part sheet comprising stamps from the horizontal F- to T-rows.

1000

The International Exhibition building
in South Kensington



Lot No. SG No.

373• DP36

(★)

1872, 1d. black, plate 27, KA / LC, block of six, large margins all round on unwatermarked thick white card struck after a million sheets had previously been printed and issued, produced by Perkins Bacon, the printers, with official permission for the SOUTH KENSINGTON EXHIBITION., (S.G.Cat. GBP 12.000)

Note: Perkins Bacon, the printers, were charged 1 pound in order to balance the accounts of the Storekeeper General when they obtained permission to keep a sheet from plate 27 of the 1d. printed in black on proof paper that had been prepared for the Annual International Exhibition at South Kensington in 1872. Upon the liquidation of the Perkins Bacon company in 1935, the sheet was sold and broken up for sale. The block from the right half of the K- and L- rows, KF-JL, is in the Phillips collection, National Postal Museum, London.

*Provenance:*The original uncut sheet:

London Philatelic Exhibition 1897, exhibited by Perkins Bacon in exhibition class: "Exhibits by Stamp Engravers" Stamp Exhibition of the Junior Philatelic Society 1908, mentioned in THE LONDON PHILATELIST, 1908, page 63

The entire sheet illustrated in THE BRITISH PHILATELIST, December 1935, pages 76 + 77 The block

of six, KA / LC, after being cut from the sheet:

Robson Lowe, 11 – 12 September 1973, lot 179

Hassan Shaida Collection, Harmers of Switzerland, 13 February 1992, lot 77

David Feldman, 3 – 8 November 1996, lot 21987

Tim Burgess Collection (illustrated in GBPS Newsletter July/August 2006)

Start price

2500

1855, Two Pence, Plate 5



Åke Rietz



Lot No.	SG No.		Start price
374•	23a Impr: (★)	<p>1855, 2d. blue, plate 5, AE, imperforate Imprimatur with upper sheet margin and inscription, good to very large margins all round, trace of oxydation. R.P.S.L. certificate (1981) (SG Cat. GBP 12.000)</p> <p><i>Provenance: Robson Lowe, 27 April 1949 („Great Britain Queen Victoria Imprimaturs Complete Collection“)</i> <i>Harmer, 27-28 Febr. 1967, lot 146</i> <i>Stothert Coillection, Robson Lowe, 29 Jan. 1975, lot 1178</i> <i>Dr. & Mme. S. (Serval) Collection, Harmer, 15-16 March 1976, lot 42</i> <i>Harmer, Private Treaty „Dr. S.“, 29 Jan. 1980, lot 42</i> <i>Phillips, 2 September 1982, lot 109</i> <i>Ake Rietz Collection, 299th. Corinthila, 7 June 2023, lot 3604</i></p>	1800



375•	35Impr: (★)	<p>1857, 2d. blue, plate 6, AE, watermark ‚Large Crown‘, imperforate Imprimatur, large to very large margins all round, very fresh and attractive (S.G.Cat. GBP 12.000)</p> <p><i>Provenance: Dr. Heygate-Vernon Collection, Robson Lowe, 25 September 1947</i> <i>De Phillp Coillection, Robson Lowe, 4 November 1959, lot 160</i> <i>Michael Lea Collection (1978)</i></p>	1500
------	-------------	---	------

1864, One Penny, Die II, Letters in All Four Corners, Plates 71–225



Lot No. SG No.

Start price

376• 43 Impri- (★)
matur

1d. rose-red, Imprimatur, with Letters in all four Corners, plate 148, AA, imperforate upper left corner sheet marginal with inscription and plate number ,148', large margins and very fresh, the unique corner marginal Imprimatur from plate 148 in private hands (AL is in the N.P.M., London, TA is in the Royal Collection, TL is still attached to the Imprimatur sheet).

Provenance: Leonard H. Clark Collection, Robson Lowe, 29 May 1946, lot ex 261.

Dr. C. Heygate-Vernon Collection, Robson Lowe, 24-25 September 1947, ex lot 735

700

377• 43 Impri- (★)
matur

1d. rose-red, Imprimatur, with Letters in all four Corners, plate 167, AA, imperforate upper left corner sheet marginal with inscription and plate number ,167', large margins, very fresh. The unique corner marginal Imprimatur from plate 167 in private hands (AL is in the N.P.M.(London), TA is in the Royal Collection, TL is still attached to the Imprimatur sheet).

Provenance: Leonard H. Clark Collection, Robson Lowe, 29 May 1946, lot ex 261.

Dr. C. Heygate-Vernon Collection, Robson Lowe, 24-25 September 1947, ex lot 750

Robson Lowe, 10 November 1948, ex lot 571

Robson Lowe, 18 February 1959, lot 298

700



Lot No. SG No.
378• 43 Impri- (★)
matur

1d. rose-red, Imprimatur, with Letters in all four Corners, plate 180, AA, imperforate upper left corner sheet marginal with inscription and plate number '180', large margins, very fresh. The unique corner marginal Imprimatur from plate 180 in private hands (AL is in the N.P.M.(London), TA is in the Royal Collection, TL is still attached to the Imprimatur sheet).

Provenance: Leonard H. Clark Collection, Robson Lowe, 29 May 1946, lot ex 261.

Dr. C. Heygate-Vernon Collection, Robson Lowe, 24-25 September 1947, ex lot 741

Robson Lowe, 10 November 1948, ex lot 567

Start price

700



Sir Cyril Humphries



379• 43 Impri- (★)
matur

1d. rose-red, Imprimatur, with Letters in all four Corners, plate 212, AA, imperforate upper left corner sheet marginal with inscription and plate number '212' and series number '254', large margins, very fresh. The unique corner marginal Imprimatur from plate 212 in private hands (AL is in the N.P.M.(London), TA is in the Royal Collection, TL is still attached to the Imprimatur sheet).

Provenance: Leonard H. Clark Collection, Robson Lowe, 29 May 1946, lot ex 261.

Dr. C. Heygate-Vernon Collection, Robson Lowe, 24-25 September 1947, ex lot 735

,Chartwell', Spink 29 June 2011, lot 1386

700



Lot No. SG No.

380• 43 Impri- (★)
matur

Start price

1d. rose-red, Imprimatur, the wonderful selection of 33 different plates, all lettered AC with upper sheet margins and inscriptions, included are plates 73, 82, 88, 92, 100, 109, 149, 166, 167, 170, 172-178, 180-183, 185, 186, 191-193, 198-200, 203, 211, 214 and 222, all with good to large margins and very fresh. (S.G.Cat.: GBP 14.025)

Provenances for the various plates: Plates 92, 109, 166, 167, 170, 173-178, 180-183, 185, 186, 191-193 and 200: 'Besancon' Collection, 268 *Corinphila*, 9 June 2021, lot 4579
Plates 172 and 214: 'Chartwell', Spink, 16 February 2012, ex lot 475
Plate 203: Jack Bailey Collection, Spink, 25 January 2023, ex lot 3183

3500



Åke Rietz



Lot No. SG No.

381• 43i

★

1d. rose-red, Imperforate proof on DR. PERKINS BLUED PAPER, plate 121, SL, large margins all round, usual minor gum creases, very fresh and rare. (S.G.Cat.: 4.500)

Provenance (as a pair SK-SL): Charles Williams Collection, Harmer, 10-18 November 1947, lot 278

Stothert Collection, Robson Lowe, 9 September 1975, lot 50

Stanley Gibbons, 17 May 1984, lot 209

Christies, 18 June 1996, lot 205

Ake Rietz Collection, Corinphila, 7 June 2023, lot 3611

Start price

600



382• DP39

(★)

1d. rose-red, Plate Proof Trials for Lighter and more Fugitive Colours, plate 191, imperforate block of four, RC / SD, good to large margins, superb impression, rich colour, diagonal and horizontal folds mainly in margin between the stamps not detracting from fine appearance. R.P.S.L. certificate (1996) (S.G.Cat. GBP 16.000) *Note: Recent research shows that just one sheet each in rose-red and in mauve has been struck from plate 191 for these trials. From the rose-red sheet the stamps of the horizontal A- to D- rows are mainly preserved in vertical pairs, all with barred trial obliterations „C.X. 8“. All stamps from the horizontal J- to N-rows are cancelled. The only uncanceled proofs in rose-red recorded in the Karl Louis Card Index are a pair RA-RB and this block of four RC / SD herewith offered.*

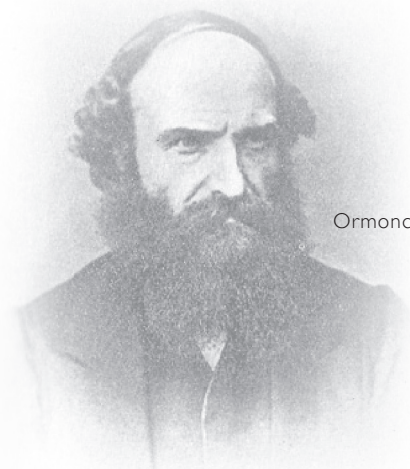
Provenance: Phillips 12 October 1989, lot 208

,TES' Collection, Spink 5 October 1995, lot 172

,BESANCON' Collection, Corinphila 12 June 2019, lot 3069

3000

1858, Two Pence, Die II, Letters in All Four Corners, Plates 7–15



Ormond Hill



Lot No. SG No.

383• DP46

(★)

1871, 2d. blue, the retouched Die II with „NEW DIE“ and „1“ (uninked but faintly embossed), completed on 8 April 1858 and printed on demand for Ormond Hill in 1871, superb and very rare. (S.G.Cat. GBP 18.000)

Provenance: „Chartwell“ Collection, Spink, 16 February 2012, lot 51

Start price

5000



John O. Griffiths



Lot No.	SG No.		Start price
384•	45 Impri- matur	(★) 1858, 2d. blue, Imprimatur, plate 7, AF, very large margins all round, very fine and fresh. (S.G.Cat. GBP 4.750) <i>Provenance: John O. Griffiths Collection, Christies, 27 June 1985, lot 4292</i> <i>Grosvenor, 18-19 November 2014, lot 710</i>	600



385•	45 Impri- matur	(★) 1858, 2d. blue, Imprimatur, plate 8, AG, imperforate with upper sheet margin and inscription, very large margins all round, very fine and fresh. (S.G.Cat. GBP 4.750) <i>Provenance: Robson Lowe, 27 April 1949 („Great Britain Queen Victoria Imprimaturs Complete Collection“), ex lot 153</i> <i>Robson Lowe, 26 September 1951, lot ex 280</i>	650
------	--------------------	--	-----



386•	45 Impri- matur	(★) 1858, 2d. blue, Imprimatur, plate 12, TF, imperforate with large margins all round, very fine and fresh. (S.G.Cat. GBP 4.750) <i>Provenance: Robson Lowe, 27 April 1949 („Great Britain Queen Victoria Imprimaturs Complete Collection“), ex lot 153</i>	600
------	--------------------	---	-----



Lady Mairi Bury



Åke Rietz

Lot No. SG No.

Start price

387• 45 Impri- (★)
matur

1858, 2d. blue, Imprimatur, plate 13 AB, imperforate with upper sheet margin and inscription, large margins all round, very fine and fresh. (S.G.Cat. GBP 4.750)

*Provenance: Lady Mairi Bury Collection, Sotheby's, 24 – 26 November 2010, lot 1284
Åke Rietz Collection, 299 Corinphila, 7 June 2023, lot 3623*

600

388• 45 Impri- (★)
matur

1858, 2d. blue, Imprimatur, plate 13, AE, imperforate with upper sheet margin and inscription, good to very large margins all round, very fine and fresh. (S.G.Cat. GBP 4.750)

Provenance: Robson Lowe, 27 April 1949 („Great Britain Queen Victoria Imprimaturs Complete Collection“), ex lot 153

650

389• 45 Impri- (★)
matur

1858, 2d. blue, Imprimatur, plate 15, AD, imperforate with upper sheet margin and inscription, good to large margins all round, very fine and fresh. (S.G.Cat. GBP 4.750)

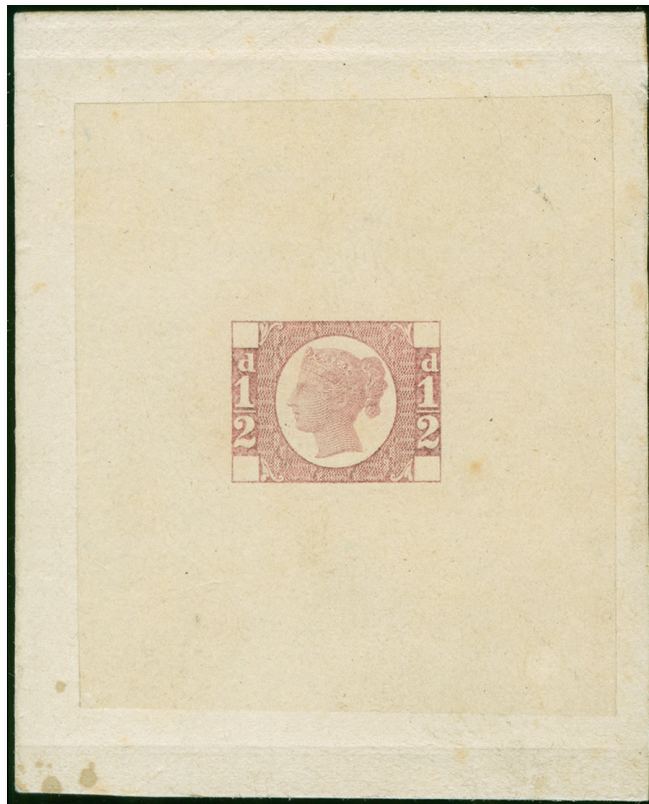
Provenance: „Durham“ Collection, Phillips, 11 November 1993, ex lot 136

650

1870, Half Penny and Three Half Pence



Postmaster General
Spencer Compton Cavendish



Lot No. SG No.
390• DP62b (★)

1870, May, Bantam ½d. die proof in rose taken after the engraving of the head was strengthened and the die was hardened, affixed to card. Very rare, said to be one of only six produced of which some are unavailable in Institutional Collections & Museums. (S.G.Cat. GBP 12.000)

*Provenance: 'Yorkshire' Collection, Christies, 27 January 1981, lot 163
Stanley Gibbons, Dealer's List, September 1992, lot 167*

Start price

2500

The Excise Office in London



Lot No. 391• SG No. 48 Impri- (★) matur

Start price

Bantam 1/2d. rose-red, Imprimaturs, the attractive selection of eight: plate 3,TJ, plate 4,TO, plate 5,TO, plate 8,TO, plate 14,AJ, plate 15,TH, plate 19,TH and plate 20,AO.All with large margins and very fresh. (S.G.Cat. GBP 7.600)

Provenance: ‚Durham‘ Collection, Phillips, 11 November 1993, ex lot 143
‚BESANCON‘ Collection, 268 Corinthila, 9 June 2021, lot 4586

2000

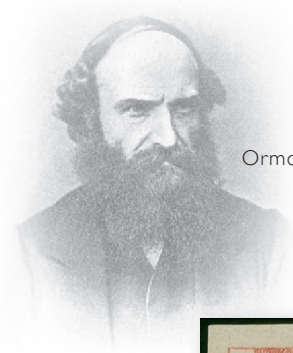


392• 48h ★

1/2 d. rose, plate 1, variety Imperforate, horizontal pair SW-SX with inverted watermark, large margins all round, large part or full original gum, very fresh and rare. According to J.B.Seymour in the Kohl Handbook (1930), a part perforated sheet was released having two rows completely imperforate. Most stamps were cut from the sheet as singles, only very few pairs recorded. (S.G. Cat.: GBP 6.000)

Provenance: ‚Verus‘ Collection, Stanley Gibbons, August 2015

1500



Ormond Hill



Lot No. SG No.

393• DP56b (★)

Start price

1871, 1½d. carmine-rose, Ormond Hill Die Proof on thin hard yellowish white wove paper, fresh and very fine, rare and beautiful proof. B.P.A. certificate (2010) (S.G.Cat. GBP 18.000)

Provenance: 'BESANCON' Collection, 239. Corinphila, 12 June 2019, lot 3079

3000



Åke Rietz



394• 53a Im-primatur (★)

1860, Prepared for use, but not issued: 1 ½ d. rosy mauve on blued paper (strong Ivory Head), AD, Imprimatur with top margin and inscription, removed small stain, fresh and very fine. Rare: only 38 stamps were taken from the Imprimatur sheet. (S.G.Cat.: GBP 7.000)

Provenance: Robson Lowe, 18 March 1953, lot 308 (incl. Laycock Collection)

Phillips, 7 December 1995, lot 224

'BESANCON' Collection, Corinphila, 12 June 2019, lot 3076

Åke Rietz Collection, Corinphila, 7 June 2023, lot 3636

1200



Sir Cyril Humphries



Lot No. SG No.

Start price

395• 52 Impr. (★)

1870, 1 ½ d. lake-red, plate 3, AH, Imprimatur with top margin and inscription, some gum remnants in the top margin from the original mounting, fresh and very fine. Only 25 stamps were taken from the Imprimatur sheet, of which AK and AL (both N.P.M. London) and TA (Royal Collection) unavailable for private collectors. (S.G.Cat. GBP 6.000)

Provenance: Board of Inland Revenue Collection handed over to De La Rue in 1883

Robson Lowe, 17 December 1975, lot 1641

,Chartwell' Collection, Spink 29 June 2011, lot 1493

800



396• 51 (G6e) ★

1½d. rose-red, plate 1, AB, imperforate, a much paler shade of rose-red than the printing on Dr. Perkins chemically prepared paper, large part original gum. (S.G.Cat. GBP 7.500)

Note: While all stamps from the generally regarded 1½d., plate 1, imperforate on Dr. Perkins chemically prepared paper only originate from a lower half sheet (M- to T- rows), nine imperforate stamps from plate 1 originate from the A- to D- rows. None of these have ever been described as being on Dr. Perkins Paper.

Provenance: Phillips, 16 November 1989, lot 229

Phillips 26, October 1995, lot 262

1000



Lot No. SG No.

Start price

397• 51 (G6g) ★

1½d. rose-red, plate 1, NK-NL, imperforate horizontal pair with sheet margin and inscription on Dr. Perkins chemically prepared paper with Wmk. Large Crown, wonderful fresh colour and gum. (S.G.Cat. GBP 15.500)

Note: Generally the trial printings on Dr. Perkins Paper show more or less blueing, especially the sheet printed from the 1d. plate 121. The 1½d. pair NK-NL shows practically no blueing, very similar as the formerly adjoining pairs above MK-ML and below OK-OL (N.P.M. London, vol. XXIX, page 45) and PK-PL (ex Joseph Silkin Collection), the only letterings recorded unused in the Karl Louis Card Index.

Provenance: ‚Verus‘ Collection, Stanley Gibbons, August 2015, lot 152

2000



398• 51 (G6f) (★)

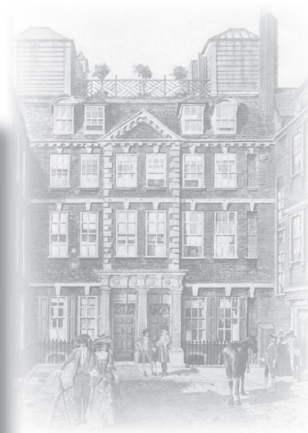
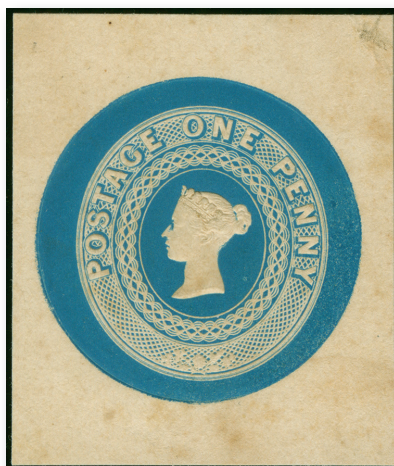
1½d. pale rose-red, plate 3, PI, imperforate plate proof on ‚Large Crown‘ watermarked paper without gum, of unknown status, possibly unique in private hands. (S.G.Cat. GBP 7.500)

Note: The proof printing has probably been taken from a later state of plate 3, especially the lower left network and the plate number ‚3‘ look quite worn. The Royal Collection contains an imperforate pair TK-TL from plate 3 stated by Sir John Wilson Bart (1952): „The status of the imperf. varieties (...) is undefined“. The Joseph Silkin Collection (Harmers June 1971) contained a very similar imperf. pair with the same letterings TK-TL as the „Royal“ pair, but with „pen stroke removed and the colour is very pale“. In the Philips Collection (vol. XXI, page 11) N.P.M. London, is an imperf. plate 3, lettered TJ, which may have originally adjoined either the „Royal“ or the „Silkin“ pair. The Marcus Samuel Collection contained an imperf. plate 3, lettered HA, with SPECIMEN overprint (unique). It might be possible, that these imperforate 1½d. plate 3 proof printings were produced in 1878/79 for trials in more lighter and fugitive colours.

Provenance: Robson Lowe, 8 September 1981, lot 1477 (described as a „proof of unknown status“)

800

1841, Postal Stationery



The Beaufort House

Lot No. SG No.

399• E12

(★)

1840, (February), Wyon's head without pendant curl and Whittings Engraving: Essay ONE PENNY in light blue, extremely rare essay, embossed on thick card, some minor staining.

Note: This essay was printed in three colours: black, light blue and dark blue. The Karl Louis Card Index has records of just two such essays on stout card in light blue, A dark blue printing of this essay affixed on a Composite sheet (Royal Collection) is dated „21 May 1840, Beaufort House“ and noted in ms. “Mr. Wyons head, the rest by us”. Very few essays printed in either light blue or dark blue are also known printed on letter sheets or envelopes, recorded in the Karl Louis Card Index, but these are unavailable for private collectors in the N.P.M. London (Philips Collection) and the German Postal Museum, Bonn / Berlin.

Provenance: Robson Lowe, 13 December 1973, lot 1006

Start price

600



400• SE1



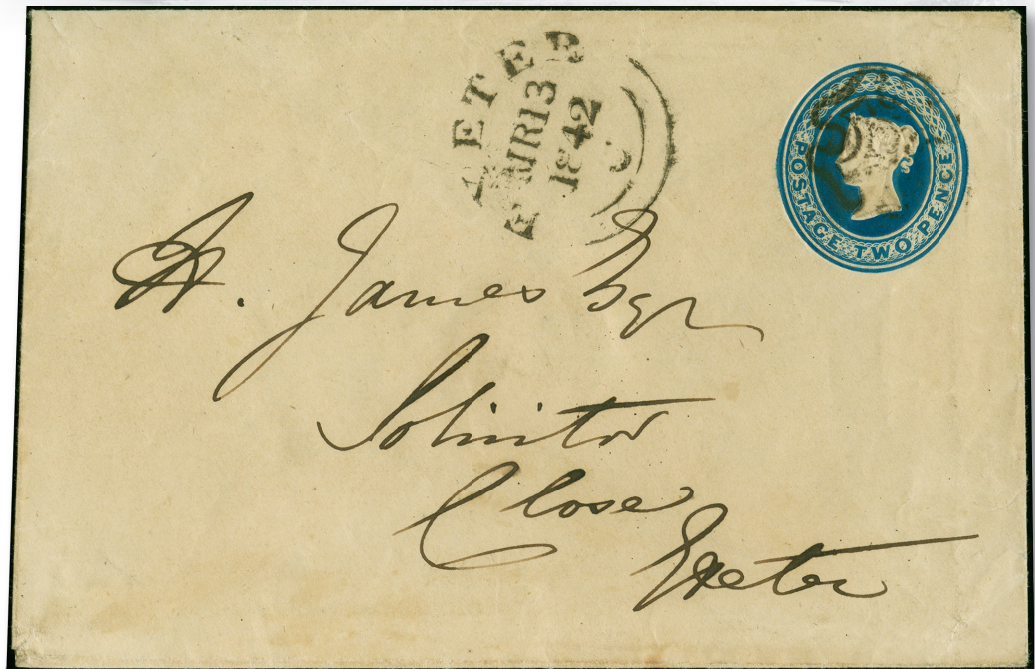
1841, Postal Stationery 1d. pink envelope cancelled by black Maltese Cross, mailed to Alcester, Warwickshire, on reverse large part datestamp „12 FE (1841)“ in red with docketing at left of receipt “Feb. 13/41“ in manuscript and internally on flap „**Arthur sends you this envelope as a specimen of the new Royal Postage Stamp**“. The second earliest example recorded, the 1d pink envelope being issued 10 February 1841 and was initially confined to the limits of the London Two-penny Post. A highly important item in regard of the change from the 'hated' Mulready's to the Penny Pinks postal stationery which were highly appreciated by the public and then in use for the next 60 years until 1901. Fine and very fresh.

Note: The earliest example of the 1d. pink was used on 10 February 1841, but is heavily restored.

Provenance: Michael Lockton Collection, 294th. Corinthia, 29 November 2022, lot 5318.

1000

View of Exeter



Lot No. SG No.

401• SE4, 13



Postal Stationery 1841, 2d. blue, embossed envelope, cancelled with black Maltese Cross and „EXETER MR 13 1842“ c.d.s. alongside, locally used, in addition 1841, 2d. blue, plate 3, MK, large margins all round, tied by black Maltese Cross to entire, „EXETER JU 19 1843“ c.d.s. on front for dispatch, addressed to Yeovil, an extremely fine and fresh „pair of covers“ showing the EXETER datestamp struck on front (instead on reverse). The 1841, 2d blue postal stationery with Maltese Cross cancellations is considerably rarer than the 2d. Mulready similiary cancelled!

Note: An almost identical Postal Stationery 2d. blue from the „James Esq., Solicitor, Close, Exeter“ correspondence dated 20 February 1842 is in the Philips Collection, N.P.M. London, vol. XXX, page 4a

Start price

750

1915, Sea horses



Los-Nr SG-No
 402• ex 405-
 413 Im-
 primatur

★★ 1915, Seahorses 2s.6d., 5s. and 10s., the left hand marginal set of Imprimaturs, removed by the N.P.M. in 1984, mint, 2/6 and 5 sh. showing portion of cross guide marks, full original gum, lightly hinged in the margins only, extremely fine and fresh. Handstamped „B.P.M.A.“ on reverse, the 10s. with additional small ink stroke of most likely official nature. An extremely rare set.

Note: The Sea Horses are the first line engraved stamps in the Kings period, over 40 years after the last Victoria line engraved issue.

Start price

5000